

RACEWEAR by AZUSA



<i>Classic Suits</i>	<i>2</i>
<i>Classic Jackets & Pants</i>	<i>3</i>
<i>Classic Size Charts . . .</i>	<i>4</i>
<i>Helmet Collars</i>	<i>5</i>
<i>Volare Suits, Jackets & Pants</i>	<i>6</i>
<i>Forza Suits, Jackets & Pants</i>	<i>7</i>
<i>Champ Size Charts . . .</i>	<i>8</i>
<i>Rib Vests</i>	<i>9</i>
<i>Kart Shoes</i>	<i>10</i>
<i>Racing Gloves</i>	<i>11</i>
<i>Contact Information . . .</i>	<i>12</i>

AZUSA "Classic" RACING SUITS

CLASSIC RACEWEAR FABRICS

Your choice of three Nylon fabrics: **DuPont Cordura Plus®**, a 1000 denier weave offering the best abrasion resistance in the industry, **Nylon 420** (420 denier) or **DuPont Antron® 500** (500 denier). One-third the weight of Cordura, Nylon 420 and Antron still provide superior abrasion protection. Cordura with a matte finish and Nylon 420 with a bright finish, both come in a wide array of colors. Antron® 500 fabric with fewer colors, has a distinctive high-shine finish.

*Cordura Plus® Suit,
Purple with White Chest
Panel & optional Single
Vertical Arm Stripes; with
Nylon 420 Purple
Horseshoe Hel-
met Collar*



*(L) Cordura Plus® Suit,
Red with Black Chest Panel;
with Nylon 420 Horseshoe
Helmet Collar*

*(R) Nylon 420 Suit,
Teal with White Chest
Panel; with Black
Nylon 420 Horseshoe
Helmet Collar*



**DuPont CORDURA PLUS®1000
Denier or NYLON 420 Denier
in 9 colors; ANTRON® 500
Denier in 4 colors**

Dual Chest Pockets

Full Length Zipper

Adjustable Half Belt

Expandable, Pleated Back

*Superior Grade Knit Ribbing at
Collar, Cuffs & Ankles*

*Fully Lined With
Plush White Poplin*

*Generous Knee &
Elbow Padding*

*(L) Cordura Plus® Suit,
Teal with Black Chest
Panel; with Black Nylon
420 Horseshoe
Helmet Collar*



*(R) Cordura Plus®
Suit, Black with Yellow
Chest Panel & optional
Single Vertical Arm
Stripes*

*Cordura Plus® Suit,
Yellow with Black Chest
Panel & optional Double
Loop Arm Stripes*



*Antron® Suit, Blue
with White Chest
Panel; with matching
Blue Azusa Racing
Gloves and Blue
Gajo "Daytona" style
Kart Boots*



COLOR CHOICES & OPTIONAL FEATURES:

DuPont Cordura Plus® and Nylon 420 offer a choice of 9 colors: Red, White, Purple, Black, Teal, Orange, Blue, Yellow and Silver-Gray. DuPont Antron® is available in 4 colors: Red, Blue, Black & White. Standard Classic suits provide a choice of any two colors: a primary suit color and a chest panel color. **OPTIONS:** Many options are available such as stripes or box-quilt stitching. See the full list on the Classic Size Chart page (page 4).

DESCRIPTION	SIZES	CORDURA 1000	NYLON 420	ANTRON®
Adult Racing Suit	XS, S, M, L, XL	1669	1677	1569
Child Racing Suit	6, 8, 10 12, 14	1670	1678	1570

CORDURA PLUS®, NYLON 420 & ANTRON® JACKETS

Tailored in the same great fabrics as our Racing Suits, and available in the same styles and nine fabulous colors (Antron® - 4 colors), these jackets and pants offer a two-piece alternative. In addition, the jackets alone have gained great popularity as a "Club Jacket" where family, friends and crew identify with their favorite drivers.



Nylon 420 Jacket,
Silver-Gray with
Purple Chest Panel

Cordura Plus® Jacket,
Red with Blue Chest
Panel & optional
Double Loop White
Arm Stripes

Nylon 420 Jacket, Blue with Red
Chest Panel & optional Single
Vertical White Arm Stripes

Cordura Plus® Jacket,
Purple with Yellow
Chest Panel & optional
Single Vertical Arm
Yellow Stripes



Top Quality Fabrics, Plush Lined

Dual Chest Pockets (Adult Sizes)

Full Zippered Front

*Superior Grade Knit Ribbing at Collar,
Cuffs & Waist*

Expandable, Pleated Back

9 Fade Resistant Colors

AZUSA CLASSIC RACING PANTS

Add a matching pair of Racing Pants to create a two-piece Racing Suit. Enjoy all the features of a one-piece, plus the benefit of removing the top-half (jacket) to cool down.

Adjustable Velcro Waist Band

Fully Lined, Plush 50/50 Poplin

Pocket-Type Side Openings

Genuine Nylon Fabrics

Zipper Fly

Knit Ribbing at Ankles

(L) Cordura Plus® Jacket
& Pants, Blue with White
Chest Panel & optional
Single Vertical White Arm
& Leg Stripes

(R) Nylon 420 Jacket,
Black with White Chest
Panel



AZUSA "Classic"
Jackets & Pants



(upper) Nylon 420 Jacket,
Red with White Chest Panel
& optional Single Vertical
White Arm Stripes

(lower) Nylon 420 Pants,
Red with optional Single
Vertical White Side Stripes;
Red Gajo "Daytona" style
Kart Boots

DESCRIPTION	SIZES	CORDURA® 1000	NYLON 420	ANTRON®	BRUISER
Adult Racing Jacket	XS, S, M, L, XL	1671	1679	1571	1660
Child Racing Jacket	6, 8, 10, 12, 14	1672	1680	1572	1663
Adult Racing Pants	XS, S, M, L, XL	1673	1681	1573	--
Child Racing Pants	6, 8, 10, 12, 14	1674	1682	1574	--

Jackets are still available in Azusa's "Bruiser" material, a soft, supple and comfortable, abrasion-resistant vinyl. Same sizes and style as Nylon Jackets, but in Classic Black only. No contrasting Chest Panels, but includes standard White Sleeve Stripes in two styles: Single Vertical or Double Loops. Legal for kart racing.

CLASSIC RACEWEAR

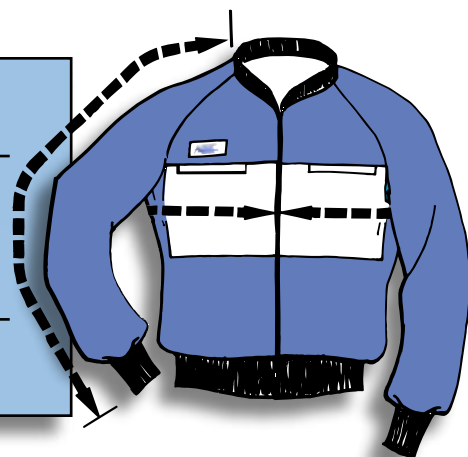
Sizes & Options

CLASSIC JACKET OPTIONS

- ☒ *Made-to-Measure Sizes*
- ☒ *Box-Quilt Stitching*
- ☒ *Arm or Chest Stripes*
- ☒ *Elbow or Shoulder Padding*
- ☒ *Color Mixing*

CLASSIC KART JACKETS

CHILD JACKETS					
	6	8	10	12	14
Chest	25-26	27-28	28-30	30-32	32-33
Neck to Wrist	20	22	23	25	26
ADULT JACKETS					
	X-SM	SM	MED	LG	X-LG
Chest	34-36	38-40	40-42	42-44	44-46
Neck to Wrist	29	30	31	32	34

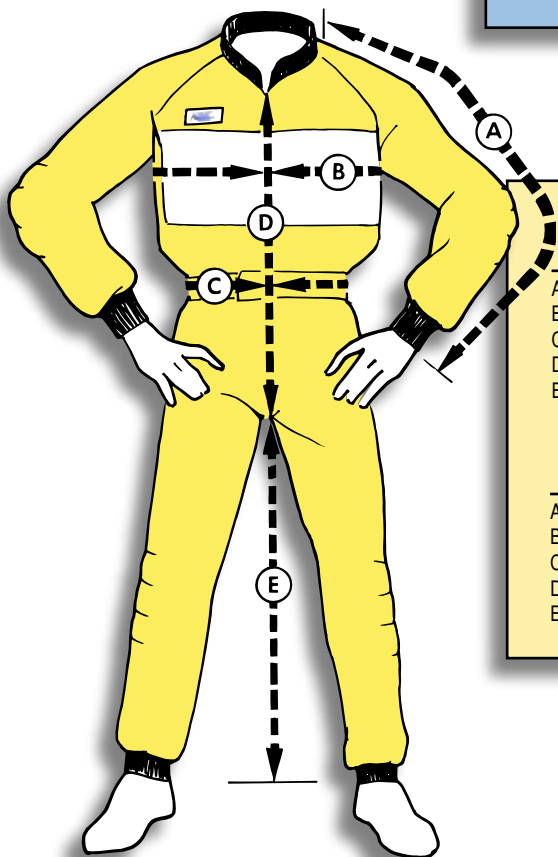


CLASSIC KART SUITS

CHILD SUITS					
	6	8	10	12	14
A - Neck to Wrist	20	22	23	25	26
B - Chest	25-26	27-28	28-30	30-32	32-33
C - Waist	21-22	23-24	24-25	26-27	27-29
D - Throat to Crotch	19	21	23	25	26
E - Inseam	21	22	24	26	27
ADULT SUITS					
	X-SM	SM	MED	LG	X-LG
A - Neck to Wrist	29	30	31	32	34
B - Chest	34-36	38-40	40-42	42-44	44-46
C - Waist	29-31	31-33	33-36	38-40	42-44
D - Throat to Crotch	28	28	29	30	31
E - Inseam	29	30	31	33	34

CLASSIC SUIT OPTIONS

- ☒ *Made-to-Measure Sizes*
- ☒ *Contrasting Box-Quilt Stitching*
- ☒ *Antron® Nylon Fabric*
- ☒ *Arm, Leg or Chest Stripes*
- ☒ *Additional Padding*
- ☒ *Elastic Loop Foot Stirrups*
- ☒ *Color Mixing*

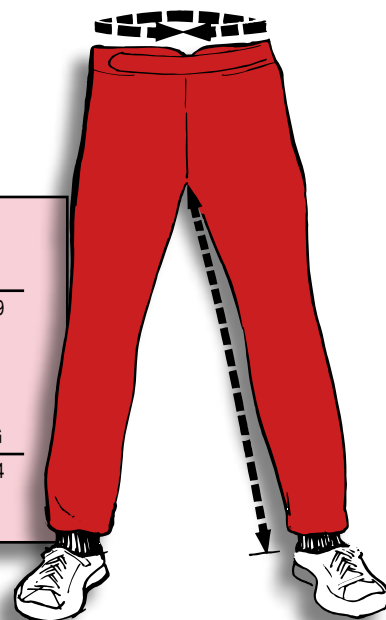


CLASSIC KART PANTS

CHILD PANTS					
	6	8	10	12	14
Waist	21-22	23-24	24-25	26-27	27-29
Inseam	21	22	24	26	27
ADULT PANTS					
	X-SM	SM	MED	LG	X-LG
Waist	29-31	31-33	33-36	38-40	42-44
Inseam	29	30	31	33	34

CLASSIC PANTS OPTIONS

- ☒ *Made-to-Measure Sizes*
- ☒ *Antron® Nylon Fabric*
- ☒ *Box-Quilt Stitching*
- ☒ *Leg Stripes*
- ☒ *Knee Padding*
- ☒ *Elastic Loop Foot Stirrups*



EMBROIDERY

Send us your custom design, logo or team insignia and for a reasonable charge, we'll embroider it in the size, color and location you desire.

THE FOAM

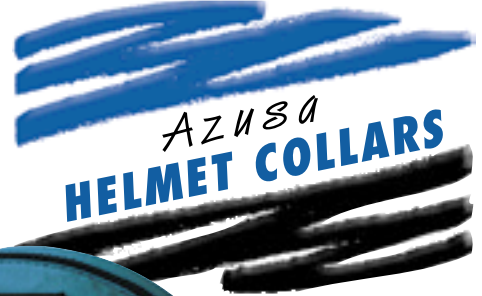
The "Astro Foam" padding used in all Azusa Helmet Collars was chosen for its unique ability to absorb high "g" forces, yet retain its original shape and support when at rest. Used by N.A.S.A. for the U.S. Astronauts, this "temperature-smart" foam is truly amazing: Smack it with a fist, the energy is absorbed without distortion, but a finger pressed into it will sink slowly and deeply, then recover its original shape when released.

THE COVERS

The "zip-off" covers are expertly tailored at our plant in Covina, California using Nylon 420 or Antron® fabric, both chosen for their smooth finish, durable wear and bright, fade resistant colors. Fully zippered for easy removal, cleaning and assembly, the fabric is simple to wash. Velcro® type fastening straps provide adjustable, secure fit.

THE RESULT

Safety, Style, Fit & Comfort. Available in six striking colors: Black, Red, Silver-Gray, Blue, Purple and Teal. (Antron® – Black, Red or Blue only) Choose Adult or Child Sizes (Full Circle Collars - Adult Sizes only).



*Zippered, Removable,
Washable Cover*

*Astro-Foam Fill – High "g"
Force absorption*

*Non-Chafing Nylon 420
or Antron® Cover*

*Stocked in Six Bright Colors
(Antron® - Red, Blue or Black)*

*Tapered, Back-to-Front for
Added Comfort & Support*

*Hook & Loop Adjustable
Fastening Strap*

Adult & Children's Sizes.



*Full-Circle – 360 degree
Comfort*

Expertly Tailored Cover

Choose Nylon 420 or Antron® Fabric
Both feature smooth, comfortable fit.
Zips off for washing

*Full-Cut "Astro-Foam"
Foundation*

*Hook & Loop Adjustable
Fastening Strap*

*Three striking Antron®
colors or six bright
Nylon 420 colors*

*Stowage Pocket for Zipper
Pull*



NOTE:

Helmet Collars are designed to support and stabilize your safety helmet.

They provide padding to the neck and collarbone area to help reduce discomfort or injury from the jars and jolts of racing.

Our Collars are not designed nor intended to prevent injuries such as whiplash or the like. Nor do we know of any Helmet Collar on the market which is able or even claims to do so.

HORSESHOE STYLE	FULL CIRCLE STYLE
Adult, Nylon 420 PART NO. 1675	Adult, Nylon 420 PART NO. 1575
Adult, Antron® PART NO. 1685	Adult, Antron® PART NO. 1585
Child, Nylon 420 PART NO. 1676	<i>Full Circle Helmet Collars are available in Adult sizes only.</i>
Child, Antron® PART NO. 1686	

Champ Style "Volare" Suits, Jackets & Pants

VOLARE

CHAMP SERIES DRIVING SUITS

Two Designs: VOLARE and FORZA
Two Styles: One-Piece (Coverall Type)
Two-Piece (Jacket & Pants)

Volare and Forza Racewear feature Tri-Color tailoring in DuPont Antron® Nylon, stocked in 4 striking colors: Red, Blue, Black & White. The 200 x 500 denier, Antron® fabric provides nice "drape" quality, vibrant sheen, and excellent abrasion resistance for your safety.

The Volare Tri-Color Design is divided into three sections. The selected "body" color carries over to the sleeves and cowl collar. A second color is chosen for the upper chest panel and vertical arm stripes. The third color selection (white is standard) is used on the lower chest panel and outlines the top chest panels and arm stripes. The additional one inch stripes, one matching the body color and one the upper chest color, are sewn on the white chest panel. **OPTIONS:** See page 8, the Champ Size Chart page for a range of available custom options.

DESCRIPTION	SIZES	PART NO.
Volare Racing Suits	XXS, XS, S, M, M-Long, L, L-Long, XL, XXL	1525
Volare Racing Jackets	XXS, XS, S, M, M-Long, L, L-Long, XL, XXL	1521
Volare Racing Pants	XXS, XS, S, M, M-Long, L, L-Long, XL, XXL	1523

VOLARE RACING JACKETS

Adjustable Cowl Collar

Elbow & Shoulder Pads

Color-matched Knit Cuffs

Box-Quilt Stitching*

Poly-Tricot Lining

Full Zippered Front

VOLARE RACING PANTS

Color-matched Knit Cuffs

Box-Quilt Stitching*

Drawstring Waist Band

Elastic Foot Stirrups

Knee Pads

Zippered Fly & Pockets

VOLARE RACING SUITS

Adjustable Cowl Collar

Shoulder, Elbow & Knee Pads

Box-Quilt Stitching*

Poly-Tricot Lining

Zippered Front & Pockets

Color-matched Knit Cuffs

Adjustable Half Belt

Elastic Foot Stirrups



Volare Racing Suit, Antron®, Red with Black & White Trim; with Red Azusa Racing Gloves and Red Gajo Bros. "Daytona" style Kart Boots

Volare Racing Suit, Antron®, Blue with Red & White Trim; with Black Nylon 420 Horseshoe Helmet Collar & Blue Gajo "Daytona" style Kart Boots

Volare Racing Jacket & Pants, Antron®, Blue with Black & White Trim; with Black Azusa Racing Gloves & Blue Gajo Bros. "Indy" style High Top Shoes

*All items available without box-quilt stitching at no extra charge

FORZA RACING JACKETS

- Adjustable Cowl Collar
- Elbow & Shoulder Pads
- Box-Quilt Stitching*
- Color-matched Knit Cuffs
- Poly-Tricot Lining
- Full Zippered Front

FORZA RACING PANTS

- Drawstring Waist Band
- Zippered Fly & Pockets
- Box-Quilt Stitching*
- Knee Pads
- Color-matched Knit Cuffs
- Elastic Foot Stirrups

CHAMP STYLE "FORZA"
Suits, Jackets & Pants

FORZA RACING SUITS

- Adjustable Cowl Collar
- Shoulder, Elbow & Knee Pads
- Box-Quilt Stitching*
- Poly-Tricot Lining
- Zippered Front & Pockets
- Adjustable Half Belt
- Color-matched Knit Cuffs
- Elastic Foot Stirrups



Forza Racing Jacket & Pants, Antron®, Black with Blue & White Trim; with Blue Azusa Racing Gloves & Black Gajo "Daytona" style Kart Boots

Forza Racing Suit, Antron®, Blue with Black & White Trim; with Black Nylon 420 Horseshoe Helmet Collar & Blue Gajo "Daytona" style Kart Boots

Forza Racing Suit, Antron®, Red with Black & White Trim; with Red Gajo "Daytona" style Kart Boots



*All items available without box-quilt stitching at no extra charge

Our standard Forza tri-color design features a "body" color: Red, Blue or Black. The forearms and cowl collar match the selected body color. The Yoke, covering shoulders and upper chest can be a second color. Finally, the chest panel and arm bands, usually white, make up the third color.

The Forza/Volare Racing Jackets incorporate the same features and color selections, right down to the box-quilt stitching and the luxurious black or white brushed poly tricot lining, and a color-matched knit ribbing waist band.

The Forza/Volare Racing Pants match the Racing Jackets in color, knit ribbing and lining. Both incorporate a zippered fly and a waist band with gathered elastic back and drawstring front.

OPTIONS: Be sure to check out customizable options and features in addition to those listed above, on page 8, the Champ Size Chart page.

DESCRIPTION	SIZES	PART NO.
Forza Racing Suits	XXS, XS, S, M, M-Long, L, L-Long, XL, XXL	1535
Forza Racing Jackets	XXS, XS, S, M, M-Long, L, L-Long, XL, XXL	1531
Forza Racing Pants	XXS, XS, S, M, M-Long, L, L-Long, XL, XXL	1523

Champ Series SIZES & OPTIONS

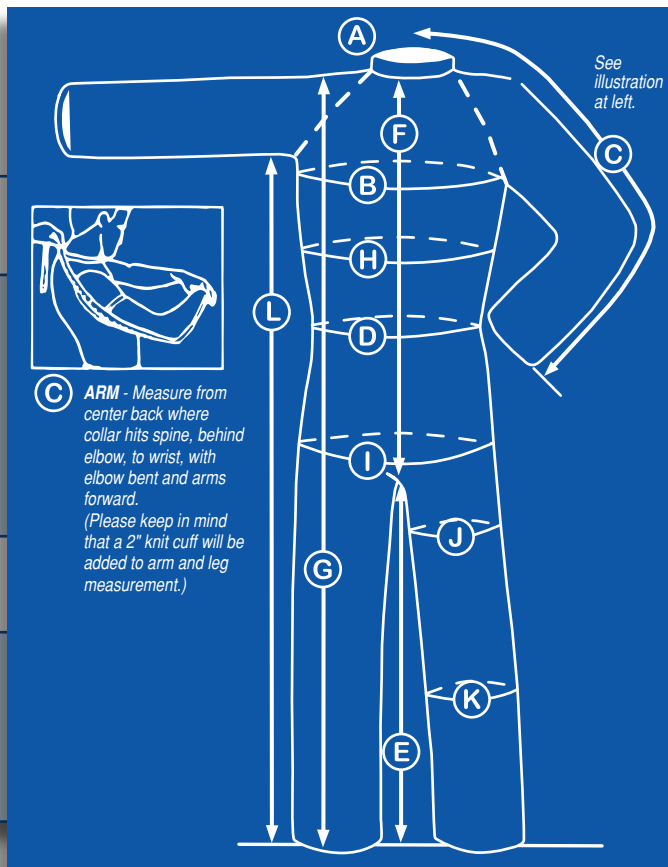
"FORZA" & "VOLARE" STYLES - SIZING

STANDARD MEASUREMENTS

- A – NECK** Measure circumference
B – CHEST Measure circumference
C – ARM (SLEEVE) See diagram at right
D – WAIST Measure biggest part of stomach
E – INSEAM Measure crotch seam to ankle bone
 (This is not necessarily your regular pants length)
F – THROAT TO CROTCH Measure from "V"
 (hollow part) of neck to where crotch seams meet

ADDITIONAL MEASUREMENTS FOR MADE-TO-MEASURE SIZES

- G –** Shoulder seam to ankle bone
H – Circumference midway between chest and waist
I – Hip circumference over largest part of buttocks
J – Thigh circumference two inches below crotch
K – Calf circumference
L – Under arm to ankle bone.



OPTIONS* - SUITS, JACKETS & PANTS

*Minimal Extra Charge

- ☒ **Extra Stripes**
Specify number, location & colors
- ☒ **Made-to-Measure Sizes**
Get the exact fit you need
- ☒ **Color Mixing**
From suit panels to stripes
- ☒ **Fabric Choices**
Choose Cordura® Plus or Nylon 420 in 9 colors
- ☒ **Extra Padding**
Specify how much and where
- ☒ **Custom Embroidery**
Your design, logo or racing team insignia

STANDARD SIZE CHART FORZA & VOLARE STYLES

SIZE	HEIGHT	WEIGHT (lbs.)	NECK (A)	CHEST (B)	ARM (C)	WAIST (D)	INSEAM (E)	CROTCH (F)	SIZE
XXS	4'5" to 4'8"	60 to 75	14.5	26 – 28	25.5	26 – 29	24	21.5	XXS
XS	4'10" to 5'4"	90 to 110	15	30 – 32	27.5	26.5 – 31	26.5	28	XS
S	5'6" to 5'8"	115 to 130	16	32 – 34	29	28.5 – 33	28	28	S
M	5'8" to 5'10"	135 to 150	17	36 – 38	30.5	32 – 36	29	28.5	M
M-LONG	5'10" to 6"	145 to 160	17	36 – 38	32	32 – 36	30.5	28.5	M-LONG
L	5'10" to 6"	165 to 180	18.5	40 – 42	33.5	33 – 38	29.5	30.5	L
L-LONG	6'0" to 6'1"	170 to 185	18.5	40 – 42	35	33 – 38	31	30.5	L-LONG
XL	6'0" to 6'1"	190 to 210	18.5	44 – 46	35	39 – 40	30	31	XL
XXL	6'0" to 6'1"	215 to 225	18.5	46 – 50	35	41 – 46	30	31.5	XXL

Jacket sizes are determined by the measurements in columns (A), (B), (C) & (D). Find your size in the corresponding size column. Pant sizes are determined by the measurement in columns (D), (E) & (F). Your size will be found in the cor-

responding size column. For made-to-measure sizes, please include measurements G, H, I, J, K, & L referenced in the blue box and illustration at the top of this page. Size column appears on both sides for easy reference.



RIB GUARD VESTS

Azusa's Rib Guards are featured in a simple, lightweight vest style designed to provide maximum protection with minimum restriction. Two layers of protection: pads of 1/4 inch thick-density foam on the inside and rigid segments of polypropylene stays on the outside.

AZUSA
Rib Guards

Handsomely covered by sleek Antron® nylon fabric, and finished with strong gross-grain piping. Two, inch-wide, black nylon straps across the vest front use hook-&-loop tabs for secure, adjustable fastening. Elastic bands in the back, provide flexible fit and cool, breathable comfort. Available in three shimmering colors: Black, Red and Blue, and made in six sizes: Extra Extra Small, Extra Small, Small, Medium-Large, Extra Large & Extra Extra Large.

*Form-Holding,
Gross-Grain Piping*

*Top Quality, Expert
Workmanship*

Two Layer Protection:
A primary barrier of impact-resistant polypropylene stays reinforces an array of high-density, closed-cell foam pads that encircle the chest and rib areas.

*Three 2" Wide
Elastic Strips:*
Secures the back for adjustable comfort

*Antron® Nylon Covers
in Three Colors*

Nylon Closure Straps
Dual Adjustable Hook & Loop Fasteners



REAR VIEW



DESCRIPTION	SIZES	PART NO.
Azusa Rib Guard	XXS, XS, S, M-L, XL, XXL	1550



“THE” PROFESSIONAL KART SHOE

Azusa is the exclusive North American distributor of these top-quality karting shoes, made in Italy by the esteemed GAJO BROTHERS. The shoes were designed exclusively for karting using input from professional kart racers. Crafted for safety, comfort, beauty and freedom of movement, they were developed using cutting edge biomechanical technology and provide maximum “feel.”

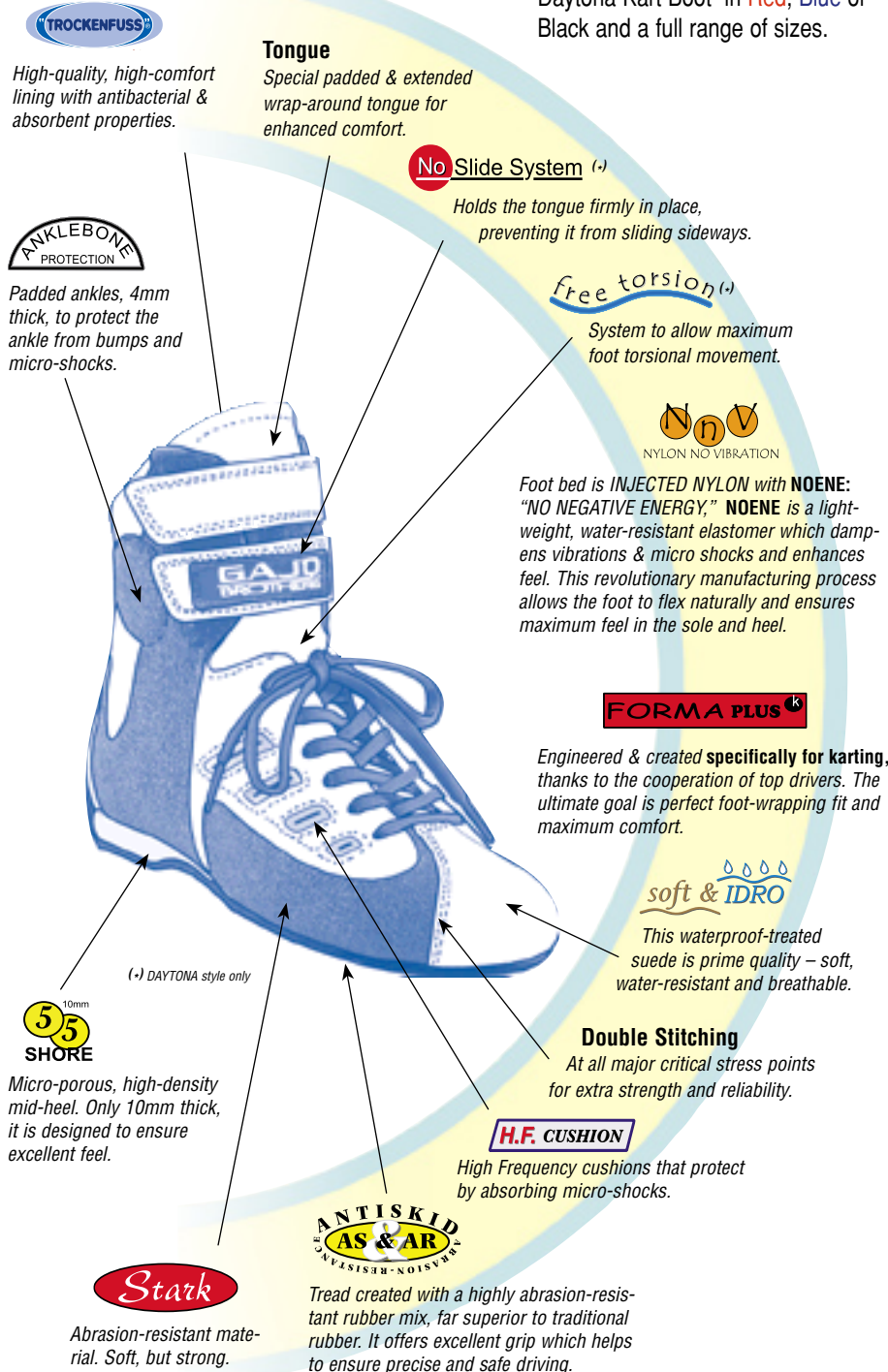
Two styles: Indy High Top shoe and Daytona Kart Boot in Red, Blue or Black and a full range of sizes.



INDY
High Top Shoe



DAYTONA
Kart Boot



DESCRIPTION	SIZES	PART NO.
INDY High Top Shoe	5, 6, 6.5, 7.5, 8, 9, 10, 10.5, 11.5, 12	1691
DAYTONA Kart Boot	5, 6, 6.5, 7.5, 8, 9, 10, 10.5, 11.5, 12	1693

DESIGNED FOR KARTING

We began from scratch with driver-demanded features to design the "Ideal" Kart Racing Glove. Combining top quality materials and craftsmanship resulted in a Racing Glove with style, comfort, functionality and wear-resistance.



GAUNTLETS

Knit Nylon Gauntlets feature elasticized wrists and leather trim strip. Stitched Leather wrist straps, with velcro fasteners, help secure the Glove and provide support.

NYLON BODY

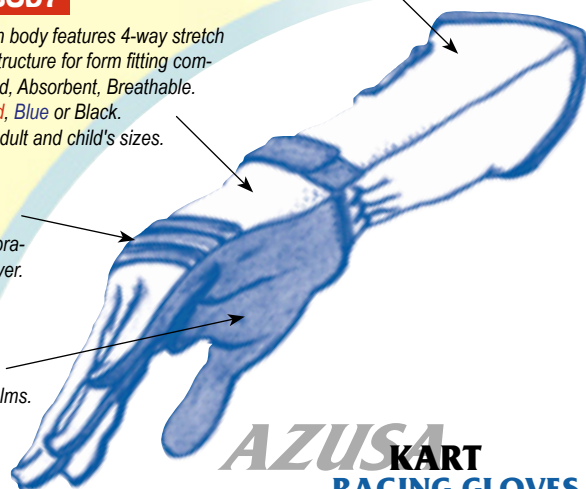
Pique knit Nylon body features 4-way stretch and 3D finger structure for form fitting comfort. Fleece-lined, Absorbent, Breathable. Available in Red, Blue or Black. A full range of adult and child's sizes.

KNUCKLE GUARDS

Padded knuckle guards with abrasion-resistant, ribbed Nylon cover.

LEATHER PALMS

Supple "Scotch Grain" Leather Palms. Full Cut. One-Piece, Seamless.



AZUSA KART RACING GLOVES

DESIGNED FOR SAFETY

Azusa offers Nomex® Bodied Gloves for an added level of safety. Black, fine-knit Nomex® was selected for its style, comfort and form-fitting characteristics while Leather appointments provide the accented colors.



FIRE-RESISTANT NOMEX®

Full Body and Gauntlet of shape-hugging fine knit, fire resistant Black Nomex.

WRIST STRAPS

Overlapping, Tapered Wrist cinches. Color-matched leather, velcro Fasteners. Anchors the glove while providing unrestricted wrist action. Zig-zag elastic stitched wrist front.

COLORED LEATHER

Supple Calf-Skin Palms, Knuckle Guards and Wrist Straps in color-dyed Red, Blue or Black.



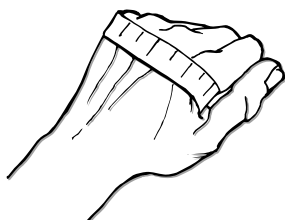
AZUSA NOMEX® RACING GLOVES

KNUCKLE GUARDS

Generous sized, Color-Matched Leather Knuckle Guards, blind embossed and double stitched for added protection and stability.

GLOVE SIZING:

Measure largest part of hand over knuckles while making a fist, excluding thumb.



ADULT	CHILD
6" - 7.5" = XS	5" - 6" = S
7" - 8.5" = S	5.5" - 6.5" = M
8" - 9.5" = M	6" - 7" = L
9" - 10.5" = L	
10" - 11.5" = XL	

DESCRIPTION	SIZES	PART NO.
Adult Racing Glove	XS, S, M, L, XL	1665
Child Racing Glove	S, M, L	1666
Adult Nomex Glove	S, M, L, XL	1565
Child Nomex Glove	S, M, L	1566

Azusa Engineering has been producing Racewear for the karting industry since the early 1960's. Then, vinyl was the material of choice and we offered Jackets and Chaps, mostly in Black, to the burgeoning sport. (The "Duffy" trophy wears early Azusa Racewear.) As Kart Racing formalized, the emphasis on safety and protection became our focus. Investigating new materials and more functional designs led to our "Classic" Racewear style, featuring DuPont Cordura® nylon. Color choices and options were

vastly expanded. We continually improved and updated our designs as needs developed; over the years, many positive changes and products have been added. We hope the products in this catalog show the dedication to Style, Quality and Affordability to which Azusa products aspire. (Note: Terms and conditions specified in our main product catalog apply to our Racewear products as well. Visit our web site: www.azusaeng.com and download our [free catalog](#) for complete details. Or, contact us as detailed below.)



1542 Industrial Park St., Covina, CA 91722-3417

Phone: (626) 967-4167 Fax: (626) 966-4071

Visit our web site: <http://www.azusaeng.com>

Our E-mail address is: sales@azusaeng.com